

Did We Get It All? Why Clean Margins Matter



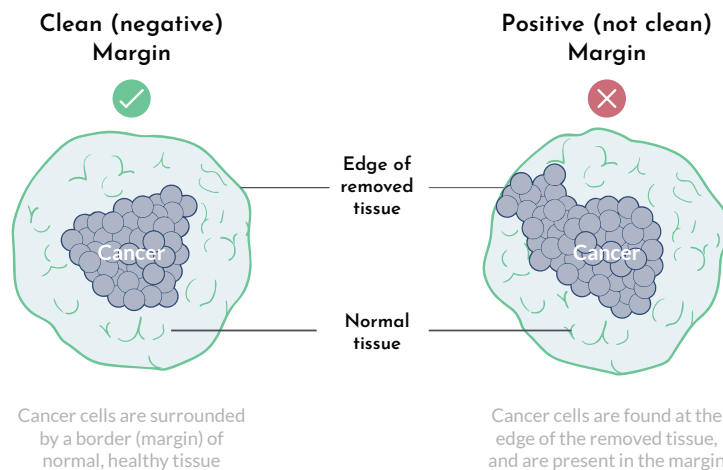
What Are Margins?

Your surgeon will remove the cancerous tumor and some normal tissue—the margin—that surrounds it. After the procedure, a pathologist will carefully examine the tissue to see if cancer cells are present in the margins. This report typically takes 2-7 days to get back.

- Margins that are free of cancer are called *clean, clear, or negative*.
- Margins that have cancer cells in them are called *positive** or *not clean*.¹

Ideally, your surgeon will know if the margins are negative during the procedure. If not, they can remove more tissue as needed until the margins are clean.

¹Margin guidance can vary depending on the cancer type. 2mm is standard of care for non-invasive breast cancer.



The Challenge of Getting Clean Margins

Surgeons will do everything they can to achieve clean margins but they cannot detect remaining cancer cells—especially with hard-to-detect cancers—by sight or touch.

Traditional imaging used in the operating room, such as X-ray, does not have the resolution needed to detect microscopic cancer cells, and Pathology must be used to confirm clean margins.

While Pathology remains the gold standard, the analysis takes several days. If Pathology detects cancer cells in the margins, patients typically must return for another procedure.

What Are the Chances of a Repeat Surgery?

Even for skilled surgeons using the latest techniques, the odds of needing a repeat surgery are relatively high—nearly 1 in 4 for some types of cancer.



New Imaging Device Gives Surgeons Real-time Insights



Meet Claire™: Real-time clarity, when it matters most

Claire combines advanced Optical Coherence Tomography (OCT) with an AI-enabled image analysis tool to bring real-time 3D clarity through the microscopic tissue depth needed to visualize margins for non-invasive cancer (2mm).

Claire has been clinically validated to highlight regions within the OCT image that are suspicious for breast cancer in order to quickly guide attention to the most concerning regions.³⁻⁴



AI overlays can be toggled **ON, Show Less, or OFF**



Highlights suspicious microstructural features associated with certain types of breast cancer like **DCIS & IDC**



Prioritized review with **look-here assistance**



Supports **surgeon-led review**

How OCT Fits Into Your Treatment Plan

The cancerous tissue that is removed during surgery is sent to Pathology to confirm clean margins.

When it is confirmed that the margins are clean (negative), you will be able to continue with the next steps in your treatment plan, putting you one step closer to getting back to doing the things you love.



1. BreastCancer.org
2. Metcalf LN, Zysk AM, Underwood HR, Et al. Beyond the Margins – Economic Costs and Complications Associated with Repeated Breast-Conserving Surgeries. JAMA Surgery; Aug. 2017 Orosco, R.K., Tapia, V.J., Califano, J.A. et al. Positive
3. US Food and Drug Administration. Claire OCT System - P250008. Premarket Approval (PMA) Approval Order. March 3, 2026.
4. Perimeter Medical Imaging AI. Wide Field OCT + AI for Positive Margin Rates in Breast Conservation Surgery. Identification No NCT05113927. Last updated December 12, 2024. Available at: <https://clinicaltrials.gov/study/NCT05113927>.

